

Test Report



Vibration test of NOAHlink main units and NOAHlink chargers

Performed for GN Otometrics A/S

DANAK-196462
Project no.: E500531
Page 1 of 3
2 annexes

2002-10-21

DELTA
Danish Electronics,
Light & Acoustics

Venlighedsvej 4
2970 Hørsholm
Denmark

Tel. (+45) 72 19 40 00
Fax (+45) 72 19 40 01
www.delta.dk



Title Vibration test of NOAHlink main units and NOAHlink chargers

Test object 3 pcs. NOAHlink main units
Serial Nos.: 000085, 154566 and 154573

3 pcs. NOAHlink chargers, Nos. 1, 2 and 3

During vibration exposures, the test specimens were fixed to a plane rigid fixture surface using stays and yokes.

See also photos in *annex 2*.

Report no. DANAK-196462

Project no. E500531

Date of test 2002-08-27

Client GN Otometrics A/S
Dybendalsvænget 2
2630 Tåstrup
Denmark

Telephone: +45 72 11 15 55

Contact person Mr. Lars Monroy

Manufacturer GN Otometrics A/S

Specifications **Functional test:**

Carried out by GN Otometrics A/S before and after the exposure. Please refer to GN Otometrics A/S for definition and results.

Vibration, random:

The test specimen was exposed without external connections and function:

10 - 20 Hz: 0,05 g²/Hz, 20 - 150 Hz: -3 dB/oct., 10 - 150 Hz: 1,6 grms, 3 x 30 min

Ref.: EN/IEC 60068-2-64, test Fh: Vibration, broad-band random (digital control).

Results

Exposures were carried out as specified. The sequence of testing was as specified above.

Please refer to GN Otometrics A/S for the results of detailed functional and visual investigations after testing.

Annex 2 contains photos and vibration curves in the sequence of testing with designation of specimen axes Z, X, Y on the first page.

DELTA test facilities used are found in *annex 1*.

Test personnel

Olling Truelsen

Date

2002-10-21

Responsible



Susanne Otto, B.Sc.E.E., B.Com. (Org.)
DELTA

Annex 1
List of instruments
(1 page)

List of instruments

REF.	ALT.	INSTRUMENT	MANUFACTURER	TYPE
U2501	Y220A	EL.DYN SHAKER	MB	EL250
ACC. 94		ACCELEROMETER	BRUEL & KJÆR	4371
ACC. 75		ACCELEROMETER	BRUEL & KJÆR	4393
22574		ACC. PRE-AMP.	BRUEL & KJÆR	2626
22613		ACC. PRE-AMP. 4-CHAN.	BRUEL & KJÆR	2692
22600		ELECTRONIC VOLTMETER	HP	34401A
22608		VIBR. CONTROLLER	DATA PHYSICS	DP550W
22616		OSCILLOSCOPE	ISOTECH	ISR620
22591		OSCILLOSCOPE	KENWOOD	CS-1025

Annex 2
Photos
(2 pages)

Test specimen axes and directions

Designation according to rectangular coordinate system shown. Specimen surfaces, edges and corners are designated by their direction from specimen centre, e.g. front, right, lower corner: (x+, y+, z+).

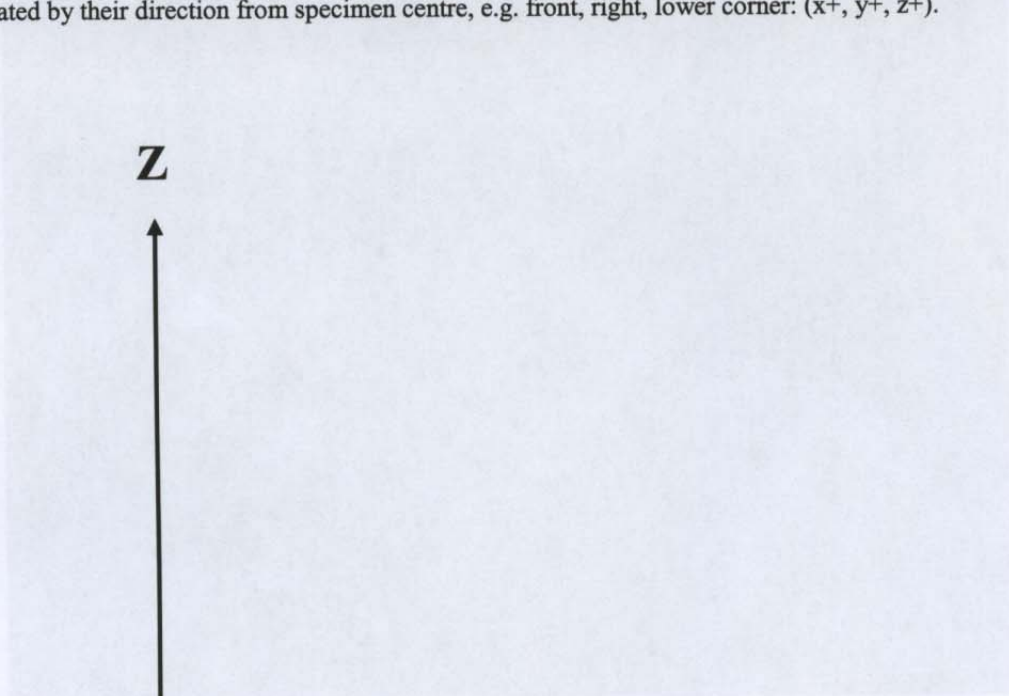
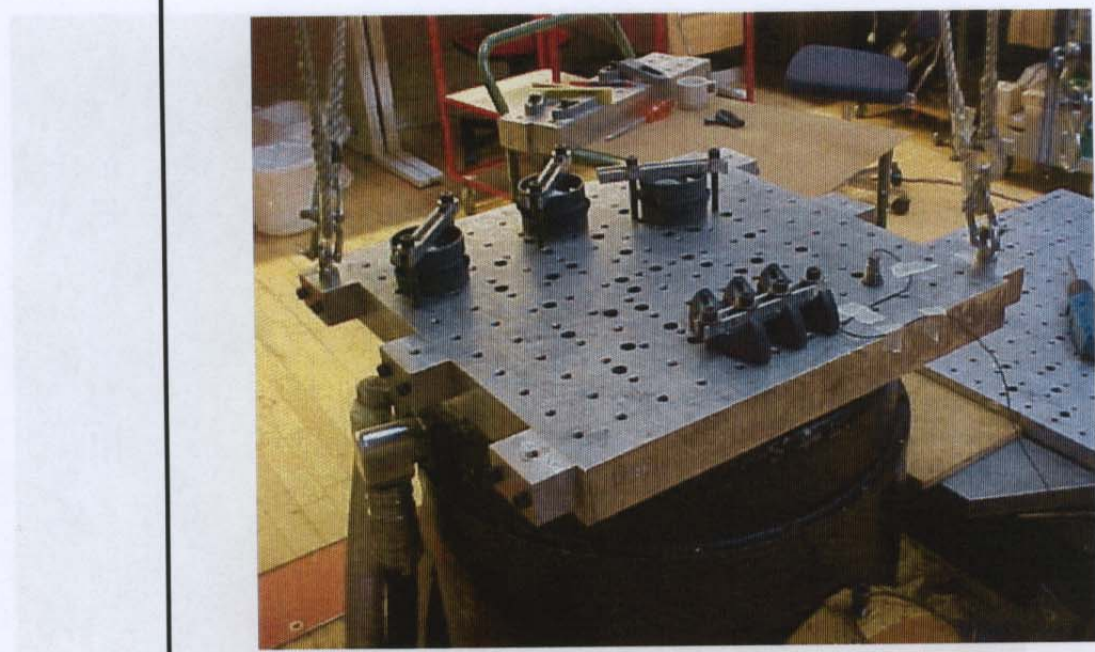


PHOTO 2 Vibration, random. Mounting of test specimens in Y-axis.



Mounting:
Z-axis
Vibration

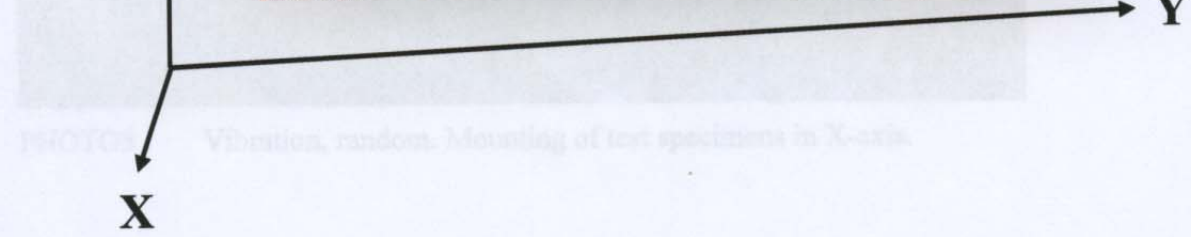


PHOTO 3 Vibration, random. Mounting of test specimens in X-axis.



PHOTO 2 Vibration, random. Mounting of test specimens in Y-axis.

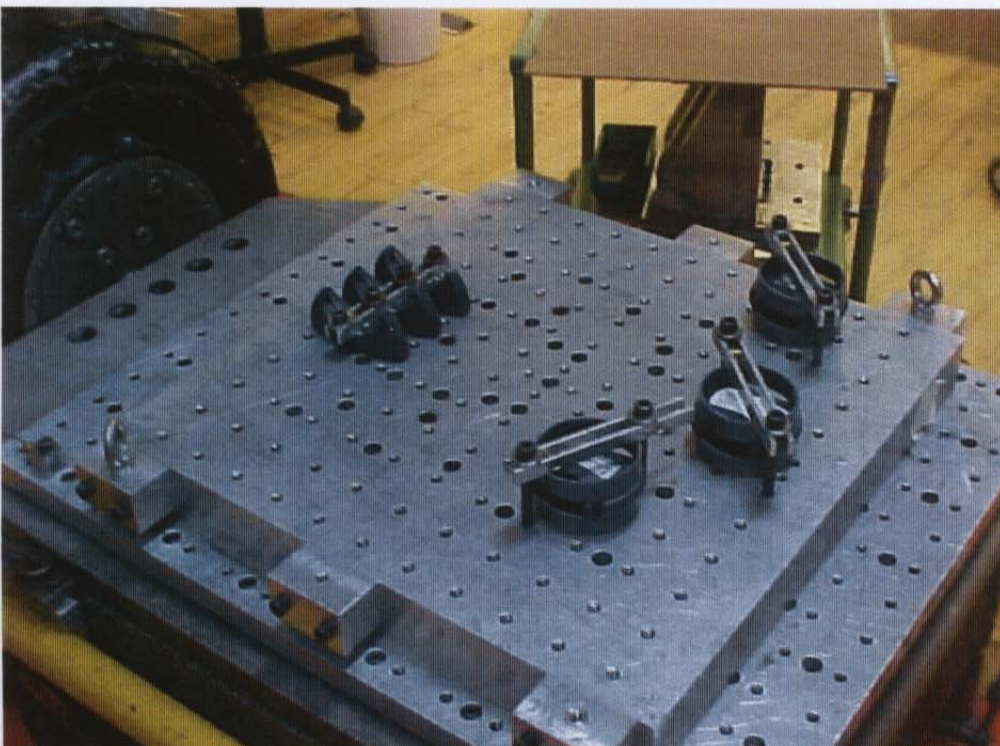


PHOTO3 Vibration, random. Mounting of test specimens in X-axis.